



AUNILO

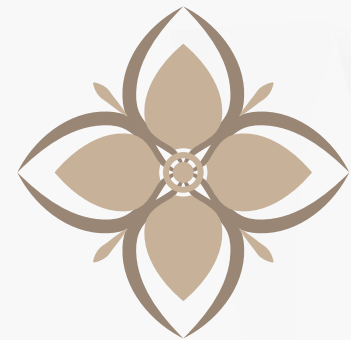


Thailand Country Report



2025

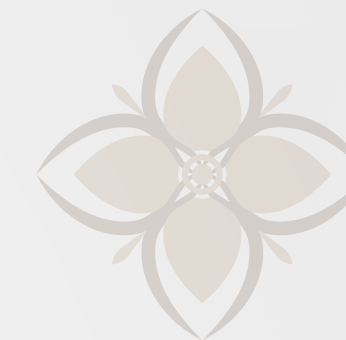




**“Futureproofing Libraries
Through Digital Innovation
and Sustainability:
Current state in Thailand”**



5 Members



BUU LIBRARY



สำนักงานวิทยทรัพยากร
OFFICE OF ACADEMIC RESOURCES
Chulalongkorn University



Mahidol University
Library and Knowledge Center



KHUNYING LONG
ATHAKRAVISUNTHORN
LEARNING RESOURCES CENTER
PRINCE OF SONGKLA UNIVERSITY





BUU LIBRARY



Profile



Burapha University



Chon Buri
(Eastern region)



Undergraduate: 20,396
Graduate: 2,374



1 College / 21 Faculties



BUU Library

2 Buildings
2,000 Seats
47 Staff

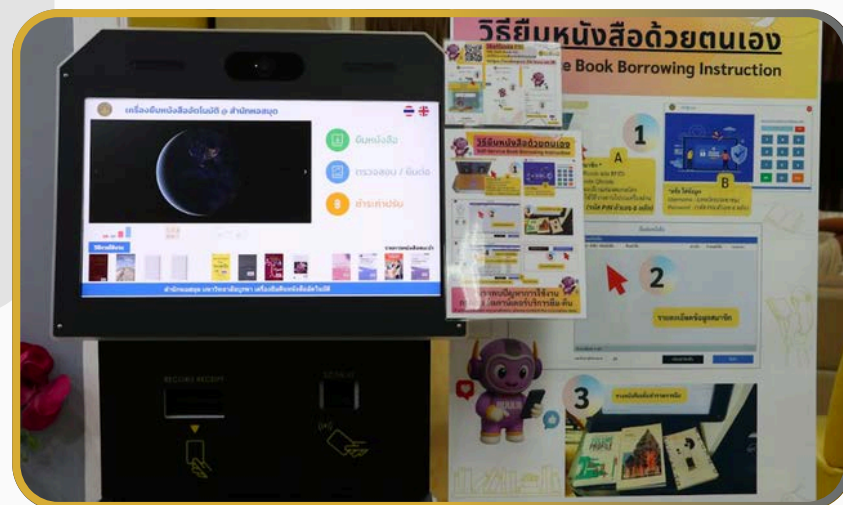
Digital Innovation



BUU LIBRARY

RFID

Implementing the RFID system in the library to support self-service borrowing and returning.



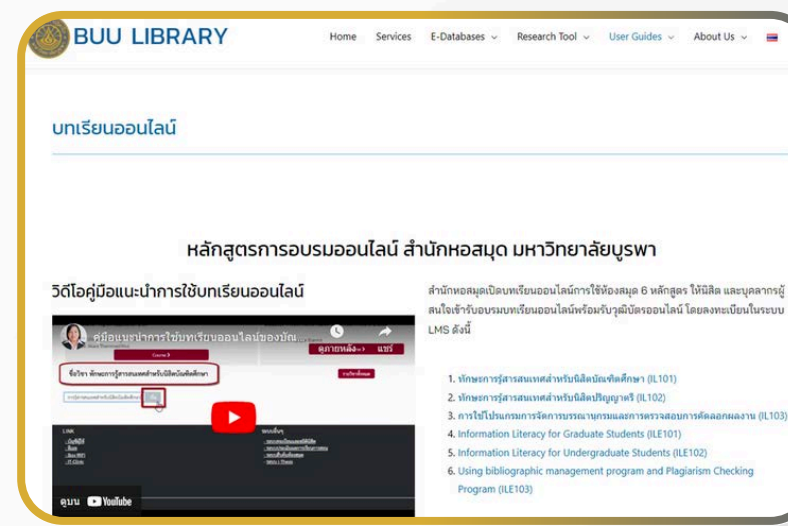
Mini Studio

Preparing rooms equipped for online instructional media production for faculty members.



Live for Life

A learning space for students, available for live streaming or video recording.

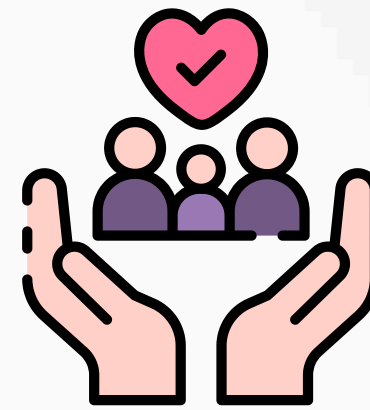


Online Course

Developing online lessons for students focused on information literacy skills.

Sustainability

- **Service Space**: Providing diverse learning environments for students and the public.
- **Library & Community**: Development Delivering academic and community outreach services, with a focus on vulnerable groups, including:
 - Knowledge Access for the Visually Impaired
 - Lifelong Learning for Older Adults
 - Digital Literacy for Seniors
 - Learning Opportunities for Inmates
- **Green Library Initiative**: Environmental Awareness Campaigns Organizing campaigns to promote water and energy conservation, waste separation, and the use of greenery to enhance learning spaces.



BUU LIBRARY





Profile



Chiang Mai University



Chiang Mai
(Northern region)



Undergraduate: 32,696
Graduate: 6,398



21 Faculties
5 Research institutes
4 Colleges
1 Graduate school



Chiang Mai University Library

Central Library & 18 Faculty Libraries
100 Staff

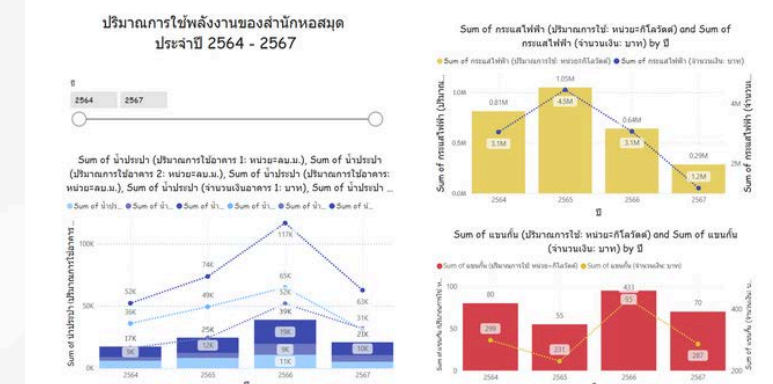
Vision : Leading learning gateway lifelong learning, research and innovation for CMU community and society

- **Focus on digital contents and service innovations**
- **Make the values, conserve and preserve resources, digital information for access and sharing**
- **Develops digital services and promotes their use for sustainable education and research**



Sustainability

Implement an environmental management system to systematically manage environmental impacts, focusing on pollution prevention, efficient use of resources, and sustainable development.



Green Library
2020

Green Office
2021

ISO 14001:2015
2024

ISO 9001:2015
ISO 45001:2018
2026

Environmental management report



Close to nature



Library atmosphere



Waste separation point



Environmental community
activities



Green collection



สำนักงานวิทยทรัพยากร
OFFICE OF ACADEMIC RESOURCES
Chulalongkorn University



Profile



Chulalongkorn University



Bangkok
(Central region)



Undergraduate: 30,510
Graduate: 11,358



42 Schools / Faculties



Office of Academic Resources

2 Branches and 22 Faculty/Institute Libraries

100 Staff

20,000 sq.m. | 2,100+ seats | 24/7 during exam

Digital Innovation



สำนักงานวิทยทรัพยากร
OFFICE OF ACADEMIC RESOURCES
Chulalongkorn University

Digital objects preservation

This year the Office of Academic Resources emphasizes the adoption and implementation of digital content dissemination and digital preservation.

- **Chula Digiverse** - The new digital repository of Chulalongkorn University has been launched with its extended system, the digital preservation system part
- **Chula AMATA*** - The digital preservation system of Chulalongkorn University digital content



*Amata or “อมตะ” (in Thai) means immortal: living or lasting for ever.
The digital content on the AMATA platform should last forever

AI applications in library

In the era that AI is increasing its potential and influence in every aspect, the Office of Academic Resources encourages staff to experiment with AI tools.

- **AI-ready staff** - The Office of Academic Resources provides a basic AI uses and AI literacy training session for all staff to make them ready for the AI era.
- **AI applications in workflow** - The staff experiment with AI implementation in their workflow. Here are some examples so far.

- Assistant to create PR content
- Idea aggregation / generation
- Metadata creation
- Content writing assistant
- Coding assistant
- etc.





Sustainability



สำนักงานวิทยทรัพยากร
OFFICE OF ACADEMIC RESOURCES
Chulalongkorn University

Chula AMATA

ลำดับ	Package ID / Submission ID	UUID AIP	ขนาดไฟล์	ชื่อชุดงาน	Collection
1	2d0f8468-af08-4caf-a3e4-4566250ba0e0	44870608-0534-420a-8aa2-ff7204ce317d	123.21 MB	Chula Digiverse	• CHULA e-Theses • วิทยานิพนธ์มหาวิทยาลัย
2	4f09b072-5b46-4767-be99-9d4f1f6a74d0	d158fa70-3a94-43b1-82d5-c1c0f8a33c	81.15 MB	Chula CUIR	• (Submission Form) Chula CUIR • CUIR_Metadata
3	63319046-ba81-4c5b-858f-b78f501c15ff	94d31f17-af0f-4016-858a-ab3d4b46dc	44.82 KB	Simplybright	• (Submission Form) Simplybright • maou CUIR
4	e42e594b-0310-4b5d-a720-7d8701c0081c	0d6cae0f-807b-448f-a1ce-0a6ad2fa40da	42.85 KB	Simplybright	• (Submission Form) Simplybright • maou CUIR
5	249227d0-118e-41e2-ae4b-ef2b20a5806	239211a5-3530-4181-9f0d-a1f726161c56	3.94 GB	Chula TAIC	• (Submission Form) Chula TAIC • Manuscripts

Chula AMATA

Long-term preservation



Long-term access



Next-gen people

Sustainability of the digital content

The digital content is highly important for learning and teaching. Especially, the content created by university can be considered the intellectual property of university.

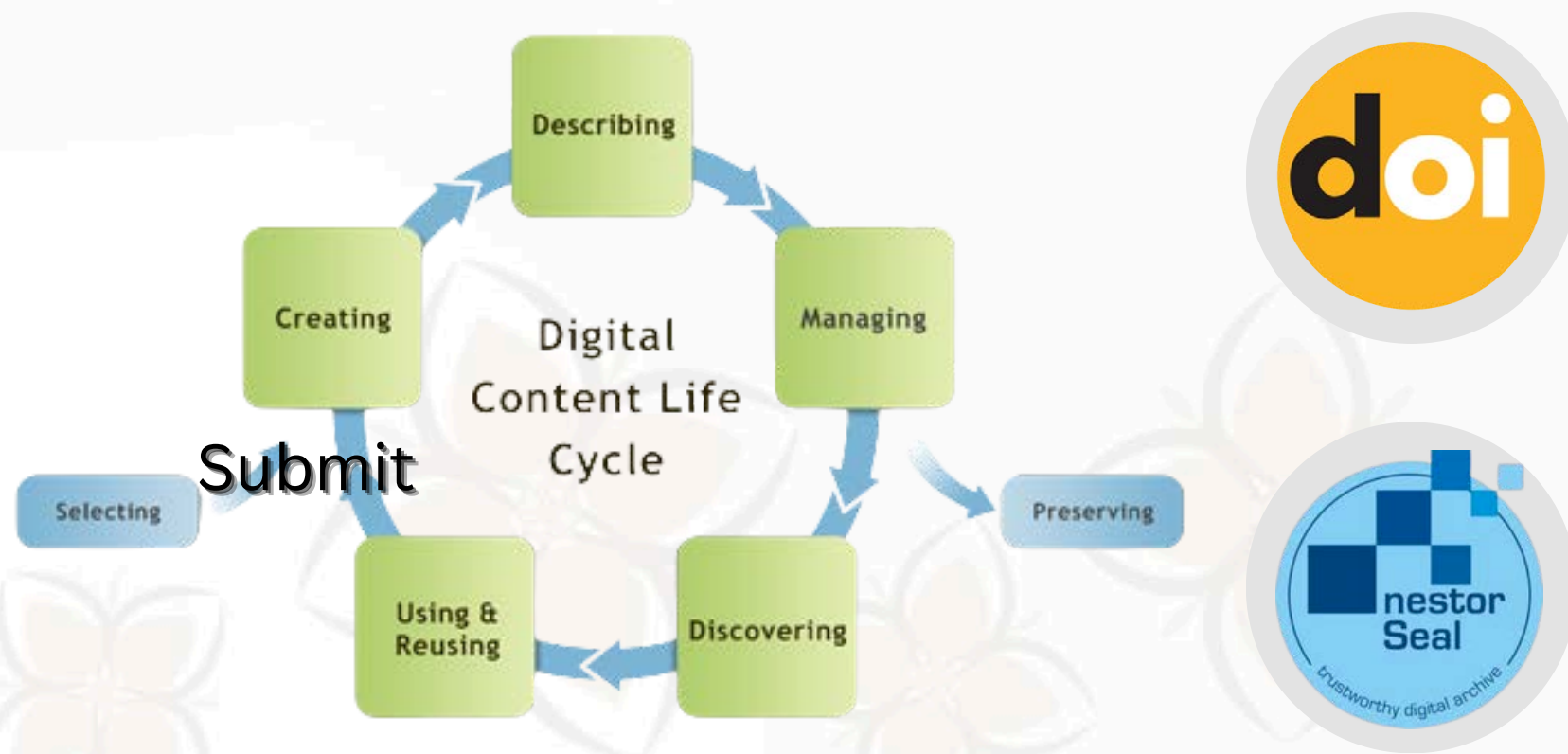
These are the Office of Academic Resources' objectives for the sustainability of digital content

Accession of digital content

- Assign DOIs to all digital objects deposited in Chula Digiverse.
 - Currently, DOIs have been assigned to all of our electronic theses

Digital preservation and long-term accession

- The digital preservation platform has been established
- Trying to adopt best practices in long-term preservation by implementing the procedures that conform with Nestor Seal requirements. We plan to submit for the assessment during 2025-2026.





Mahidol University
Library and Knowledge Center

Profile



Mahidol University



Nakhon Pathom (Central region)



Undergraduate: 23,898
Graduate: 9,108



17 Faculties
8 Research Institutes
5 Colleges



**Mahidol University
Library and Knowledge Center**

Central Library & 10 Faculty Libraries
130 Staff

Total 15,000 sq.m. (2,450+ seats)



Digital Innovation



Mahidol University
Library and Knowledge Center

Digital in Operation

AI Partnership

- Staff and student training
- AI Assisted Workflow for Strategic Management, PR, Reports, NEWS, etc.

IoT for Building Management

- Air quality and circulation
- Space management (seats and rooms availability, etc.)

Data-Driven Decision Making

- Services statistics



Daily AQI and Comfort Level Dashboard

11.00 น.

1 ก.ค. 2568

จำนวนผู้ใช้งาน 98

รายการตรวจวัด

ชั้น 1

ชั้น 2

ชั้น 3

ภายนอกอาคาร

อุณหภูมิเฉลี่ย (°C)

24

24

24

24

-

23

34

PM2.5 (µg/m3)

4

6

5

7

-

4

12

CO₂ (ppm)

410

414

410

415

-

411

409

Humid (RH)

64

59

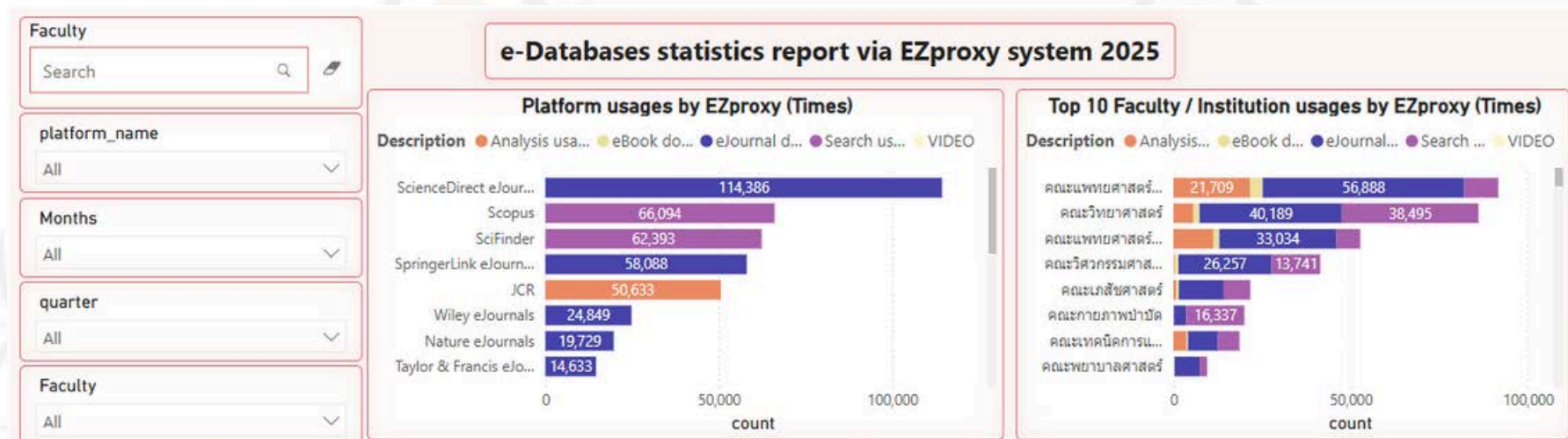
67

64

-

55

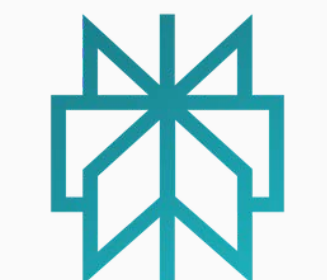
76



Digital in Service

Applications of VR/AR

- Soft skill enhancement for staff and students (Communication)
- Enhance teaching and learning for disabilities (University and High school levels)



AI Corner

- Pro-package for ChatGPT, Clude, Perplexity

Chat Bot (Line)

- Book searching and circulation
- Teaching and Training (Endnote, Turnitin, etc.)

ผู้ช่วยคนใหม่จากหอสมุดฯ

MU Library Line Chatbot

- สะดวกในการค้นหาหนังสือผ่าน Line
- แจ้งเตือนเมื่อถึงกำหนดคืนหนังสือ
- แจ้งเตือนเมื่อมีหนังสือมาส่ง Book Delivery
- ช่วยต่ออายุการยืมหนังสือง่าย ๆ ทางช่องแชต
- แนะนำการใช้งานโปรแกรม Turnitin, Endnote ฯลฯ

Sustainability



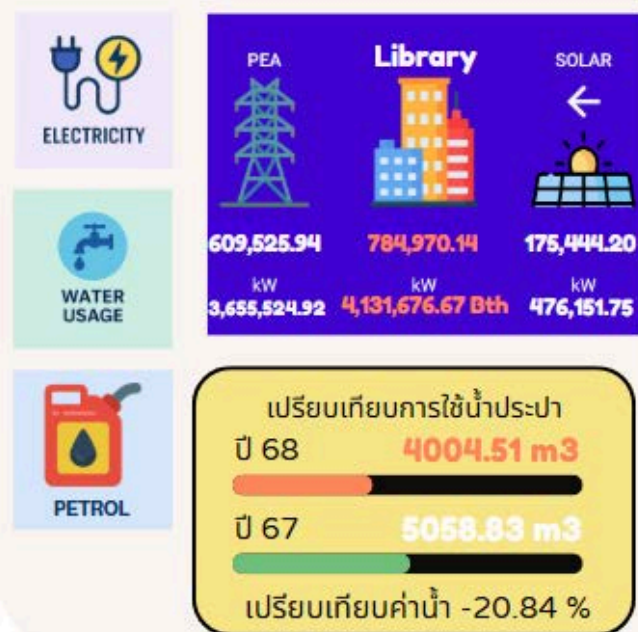
Mahidol University
Library and Knowledge Center

Digital in Management for Sustainability

Resources management

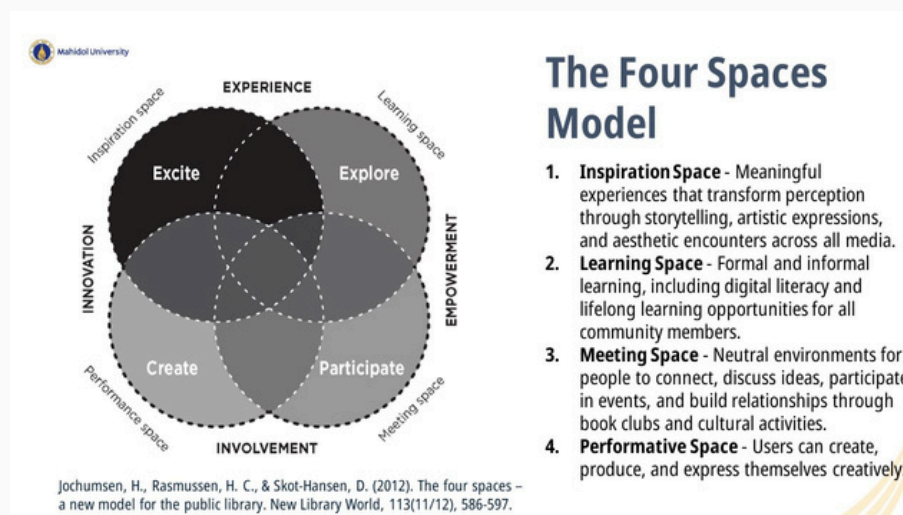
- Dashboard for electricity, water, fuels, etc.
- Dashboard for office inventory
- Utilization indicators development, e.g. cost/user, cost/book, cost/unit, etc.

Utilities Saving Potentials



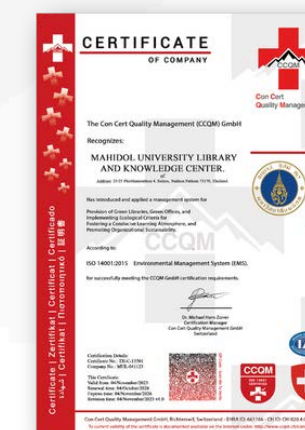
Space Management Standard

- Connecticut State Library
- Sasaki Library Space Planning
- Four Space Model



Quality, Operation, and Services Standards

- EdPEX (MBNQA Equivalent)
- ISO 9001
- ISO 14001
- Green Office/Library
- Green procurement
- TCAS 2001-2567 (CoretrustSeal Equivalent)





Profile



Prince of Songkla University



Songkhla
(Southern region)



Undergraduate: 33,912
Graduate: 3,450



38 Schools / Faculties



Khunying Long Athakravisunthorn Learning Resources Center

33 Staff
12,275 sq.m. | 1,416+ seats | 24/7 during exam



Digital Innovation

Futureproofing Libraries Through Digital Innovation and Sustainability



Robot Inventory

- The development of a **robot-assisted book inventory system** aims to ensure the completeness and accuracy of library collections, reduce manual workload, and enhance operational efficiency through automated and reliable shelf inspections.

Face Recognition

- Face recognition technology** is implemented in the library to enhance security, streamline user authentication, and improve access control to library services and facilities.





Sustainability

Futureproofing Libraries Through Digital Innovation and Sustainability

